

# Chunky Mesh Overshirt

By Michelle Greenberg



Difficulty Level



## MATERIALS

### Yarn

300-400 yards (275-360m) of a super bulky cotton yarn like [Loopy Mango's Big Cotton](#)

### Hook

10mm

## GAUGE AND SIZING

**16sts by 7 rows on an 8x8" (20x20cm) swatch in the dc, ch1 mesh used in the pattern**

### Sizing

To fit up to bust measurement:  
S/M - 36in (90cm)  
L/XL - 42in (105cm)  
2X/3X - 52in (135cm)

Instructions are written S/M (L/XL, 2X/3X)

[CLICK HERE FOR COMMON CROCHET ABBREVIATIONS](#)

## OVERVIEW

This chunky overshirt is worked sleeve to sleeve. First, one sleeve is worked, then chains are added to either side of the sleeve to create the foundation rows for the back and front body panels. While working the body panels, the front panel is separated to create the cardigan-style opening. Finally the 2nd sleeve is worked. The piece is folded in half, seamed along the underarms and sides and a simple, single crochet collar is added.



# Pattern

## First Sleeve

**To begin, chain 30 (34, 38)**

**Row 1:** Skip the first chain, and work 1sc in each rem chain. 29 (33, 37)sts.

**Row 2:** Ch1, turn, 1sc in each st.

**Row 3:** Ch4 (counts as 1dc and ch1) skip the next st, make 1dc in the next st. \*Ch1 skip the next st, make 1dc in the next st\* repeat between \*\* to the end of the row.

**Repeat row 3 for a total of 5 rows of mesh.**

## Front panel

With working yarn still attached to your project, **chain 29**

**Panel row 1:** Skip the first 5 chs (counts as 1dc, ch1 and skipped ch) work 1dc into the 6th chain. \*Ch1, skip 1ch, 1dc in next ch\* rep between \*\* until you reach your sleeve. Ch1, 1dc in the dc on the sleeve and continue working in the dc mesh pattern across the sleeve.

## Back panel

Repeat instructions for front panel. When you work across the new back panel chains and across the sleeve, continue working in the mesh pattern across the front panel stitches as well.

## Growing your panels

Continue working in the dc mesh pattern until your front panel has 7 (9, 11) rows and your back panel has 6 (8, 10) rows

# Pattern Continued

## Front panel opening

On the next row: Continue working in the dc mesh until you've completed a total of 23 (24, 25) dc sts. Then, ch 39 (41, 43).

Again, skip the first 5 chs and work 1dc in the 6th chain and continue working in the dc mesh along your entire piece until your 2nd front panel has 6 (8, 10) rows.

## Other sleeve

On the 7 (9, 10)th front panel row, work only the first 28 (30, 32) dcs.

Ch4, turn and work back the other way for 15 (17, 19) dcs (counting your turning chain).

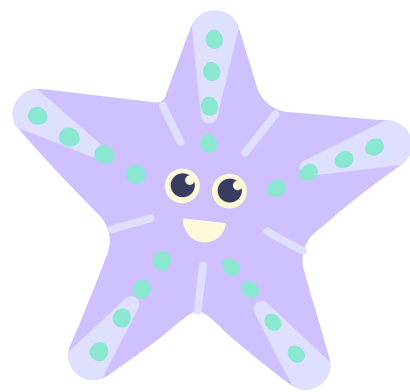
Ch4, turn and continue working in dc mesh for 5 sleeve rows. Finish off with 2 rows of single crochet.

## Seaming

Fold your piece in half and seam along the underside of the sleeves and along the sides of the body panels. I added an optional row of single crochet all along the front edge of my shirt. Work 1sc for each chain and dc, for an even edge.

## Collar

Fasten on a new yarn along the neck opening, 13 dc stitches up from the bottom edge of one of the front panels. Work in single crochet up around the neck to the stitch 13 dcs up from the bottom of the other front panel. Work 6 rows of sc total, fasten off.



# Tutorial

**To save ink, don't print this page. Select only pages 1-4 when printing**

This shirt has a handy video tutorial! [Click here](#) if you're viewing this pattern online



Here's a helpful shot of the finished piece before seaming



# Thank You!



I hope you enjoyed it as much as I enjoyed making it for you all. Before you ask, yes, you can sell any items you craft using this pattern! I also encourage you to contact me anytime with questions.

Happy Stitching!

- *Michelle*

